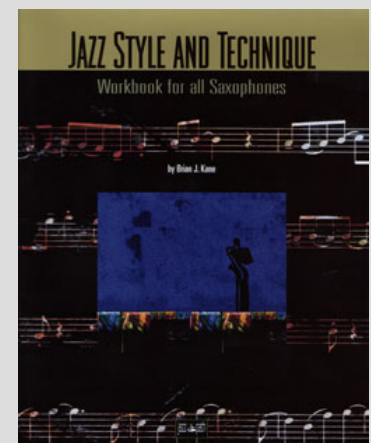
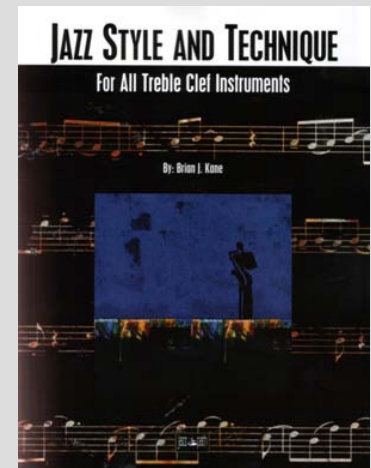


Play Smart-Practice Series **Free Music Lessons from** **Jazz Path Publishing**

Modal Scales and Exercises **for Treble Clef**

Brian Kane

Books available at music retailers nationwide,
Jazzpath.com, Amazon.com and internationally
Through Sunhawk Digital Music at sunhawk.com



C MAJOR MODES

IONIAN MODE



DORIAN MODE



PHRYGIAN MODE



LYDIAN MODE



MIXOLYDIAN MODE



AEOLIAN MODE



LOCRIAN MODE



MODAL DIATONIC ARPEGGIOS

CM7

D-7

E-7

FM7



G7

A-7

B-7b5



D \flat MAJOR MODES

IONIAN MODE

DORIAN MODE

Musical notation for the Ionian and Dorian modes in D-flat major. The Ionian mode is shown as a half-note scale: D \flat , E \flat , F \flat , G \flat , A \flat , B \flat , C \flat , D \flat . The Dorian mode is shown as a half-note scale: D \flat , E \flat , F \flat , G \flat , A \flat , B \flat , C \flat , D \flat , E \flat , F \flat , G \flat , A \flat , B \flat , C \flat , D \flat .

PHRYGIAN MODE

LYDIAN MODE

Musical notation for the Phrygian and Lydian modes in D-flat major. The Phrygian mode is shown as a half-note scale: D \flat , E \flat , F \flat , G \flat , A \flat , B \flat , C \flat , D \flat , E \flat , F \flat , G \flat , A \flat , B \flat , C \flat , D \flat . The Lydian mode is shown as a half-note scale: D \flat , E \flat , F \flat , G \flat , A \flat , B \flat , C \flat , D \flat , E \flat , F \flat , G \flat , A \flat , B \flat , C \flat , D \flat .

MIXOLYDIAN MODE

AEOLIAN MODE

Musical notation for the Mixolydian and Aeolian modes in D-flat major. The Mixolydian mode is shown as a half-note scale: D \flat , E \flat , F \flat , G \flat , A \flat , B \flat , C \flat , D \flat , E \flat , F \flat , G \flat , A \flat , B \flat , C \flat , D \flat . The Aeolian mode is shown as a half-note scale: D \flat , E \flat , F \flat , G \flat , A \flat , B \flat , C \flat , D \flat , E \flat , F \flat , G \flat , A \flat , B \flat , C \flat , D \flat .

LOCRIAN MODE

Musical notation for the Locrian mode in D-flat major. The scale is shown as a half-note scale: D \flat , E \flat , F \flat , G \flat , A \flat , B \flat , C \flat , D \flat , E \flat , F \flat , G \flat , A \flat , B \flat , C \flat , D \flat .

MODAL DIATONIC ARPEGGIOS

D \flat M7

E \flat -7

F-7

G \flat M7

Musical notation for the diatonic arpeggios in D-flat major. The first row shows four arpeggios: D \flat M7, E \flat -7, F-7, and G \flat M7. Each arpeggio is shown as a half-note scale.

A \flat 7

B \flat -7

C-7 \flat 5

Musical notation for the diatonic arpeggios in D-flat major. The second row shows three arpeggios: A \flat 7, B \flat -7, and C-7 \flat 5. Each arpeggio is shown as a half-note scale.

D MAJOR MODES

IONIAN MODE



DORIAN MODE



PHRYGIAN MODE



LYDIAN MODE



MIXOLYDIAN MODE



AEOLIAN MODE



LOCRIAN MODE



MODAL DIATONIC ARPEGGIOS

DM7

E-7

F#-7

GM7



A7

B-7

C#-7b5



E \flat MAJOR MODES

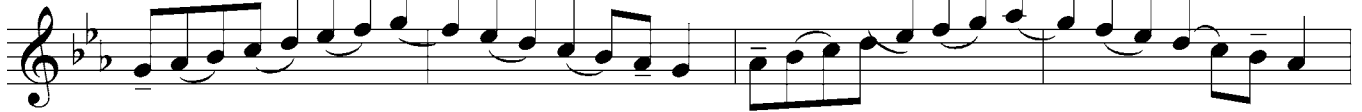
IONIAN MODE



DORIAN MODE



PHRYGIAN MODE



LYDIAN MODE



MIXOLYDIAN MODE



AEOLIAN MODE



LOCRIAN MODE



MODAL DIATONIC ARPEGGIOS

E \flat M7

F-7

G-7

A \flat M7B \flat 7

C-7

D-7 \flat 5

E MAJOR MODES

IONIAN MODE



DORIAN MODE



PHRYGIAN MODE



LYDIAN MODE



MIXOLYDIAN MODE



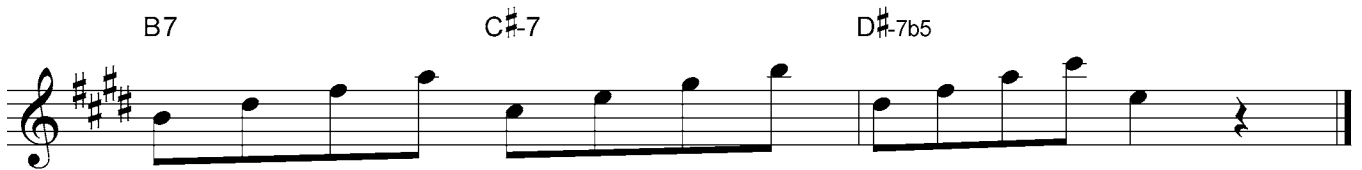
AEOLIAN MODE



LOCRIAN MODE



MODAL DIATONIC ARPEGGIOS



F MAJOR MODES

IONIAN MODE

DORIAN MODE

PHRYGIAN MODE

LYDIAN MODE

MIXOLYDIAN MODE

AEOLIAN MODE

LOCRIAN MODE

MODAL DIATONIC ARPEGGIOS

FM7 G-7 A-7 B \flat M7

C7 D-7 E-7 \flat 5

G \flat MAJOR MODES

IONIAN MODE



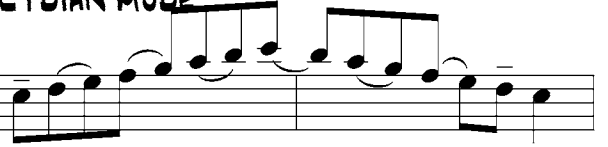
DORIAN MODE



PHRYGIAN MODE



LYDIAN MODE



MIXOLYDIAN MODE



AEOLIAN MODE



LOCRIAN MODE



MODAL DIATONIC ARPEGGIOS

G \flat M7

A \flat -7

B \flat -7

BM7



D \flat 7

E \flat -7

F-7 \flat 5



G \flat MAJOR MODES

IONIAN MODE



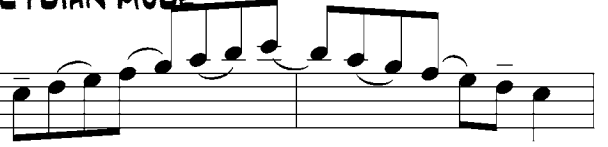
DORIAN MODE



PHRYGIAN MODE



LYDIAN MODE



MIXOLYDIAN MODE



AEOLIAN MODE



LOCRIAN MODE



MODAL DIATONIC ARPEGGIOS

G \flat M7A \flat -7B \flat -7

B M7

D \flat 7E \flat -7F-7 \flat 5

G MAJOR MODES

IONIAN MODE

DORIAN MODE

PHRYGIAN MODE

LYDIAN MODE

MIXOLYDIAN MODE

AEOLIAN MODE

LOCRIAN MODE

MODAL DIATONIC ARPEGGIOS

GM7 A-7 B-7 CM7

D7 E-7 F#-7b5

A \flat MAJOR MODES

IONIAN MODE



DORIAN MODE



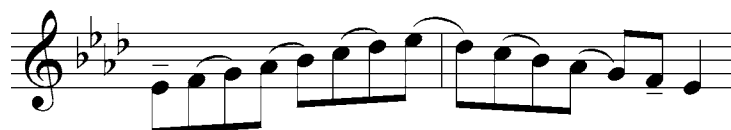
PHRYGIAN MODE



LYDIAN MODE



MIXOLYDIAN MODE



AEOLIAN MODE



LOCRIAN MODE



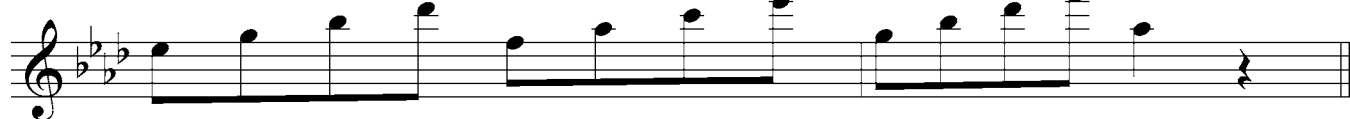
MODAL DIATONIC ARPEGGIOS

A \flat M7B \flat -7

C-7

D \flat M7E \flat 7

F-7

G-7 \flat 5

A MAJOR MODES

IONIAN MODE



DORIAN MODE



PHRYGIAN MODE



LYDIAN MODE



MIXOLYDIAN MODE



AEOLIAN MODE



LOCRIAN MODE



MODAL DIATONIC ARPEGGIOS

AM7

B-7

C#-7

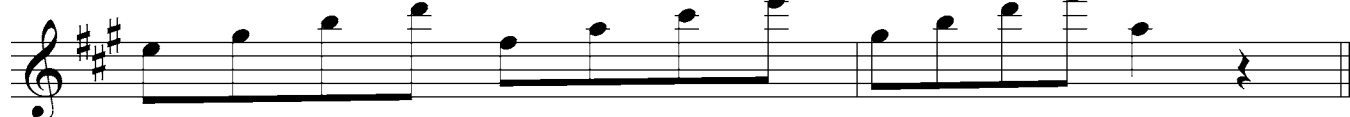
DM7



E7

F#-7

G#-7b5



B \flat MAJOR MODES

IONIAN MODE



DORIAN MODE



PHRYGIAN MODE



LYDIAN MODE



MIXOLYDIAN MODE



AEOLIAN MODE



LOCRIAN MODE



MODAL DIATONIC ARPEGGIOS

B \flat M7

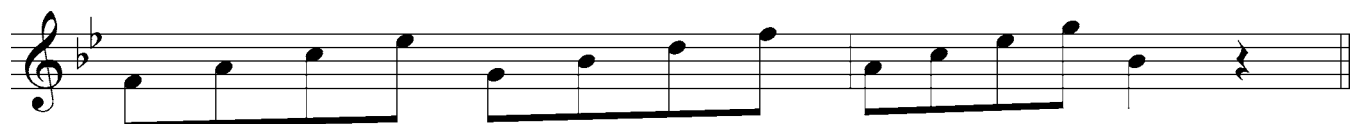
C-7

D-7

E \flat M7

F7

G-7

A-7 \flat 5

B MAJOR MODES

IONIAN MODE



DORIAN MODE



PHRYGIAN MODE



LYDIAN MODE



MIXOLYDIAN MODE



AEOLIAN MODE



LOCRIAN MODE



MODAL DIATONIC ARPEGGIOS

Bm7

C#-7

D#-7

Em7



F#7

G#-7

A#-7b5

